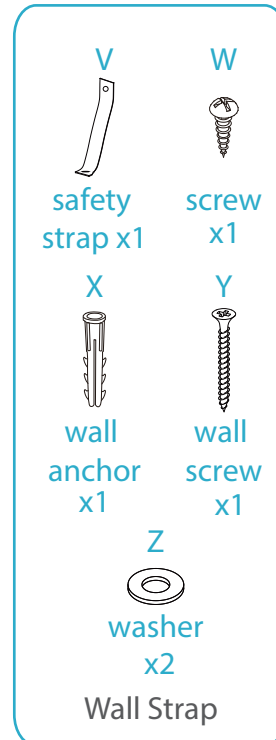
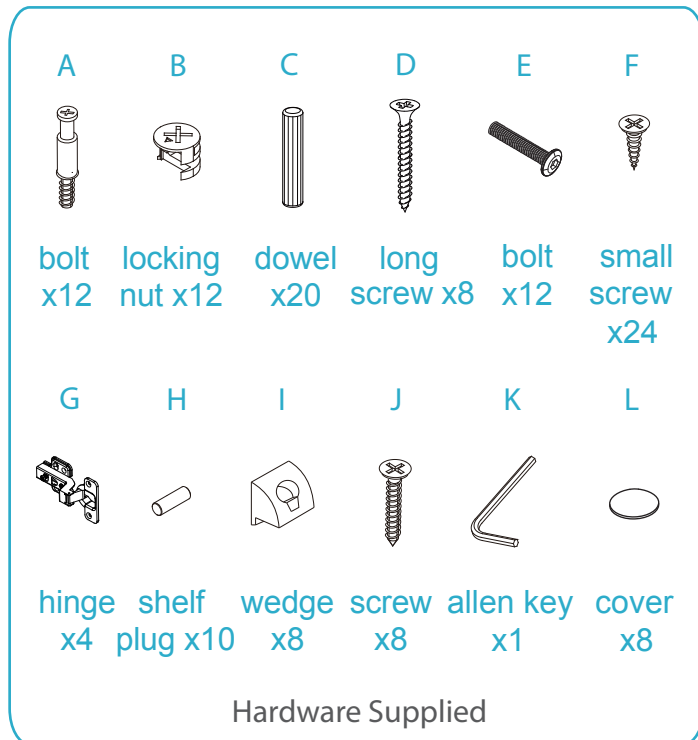


Vibe/Olsen Buffet

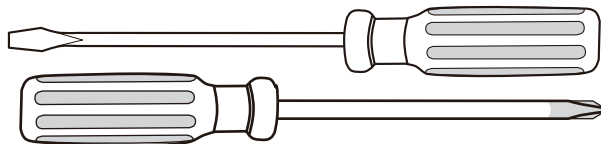
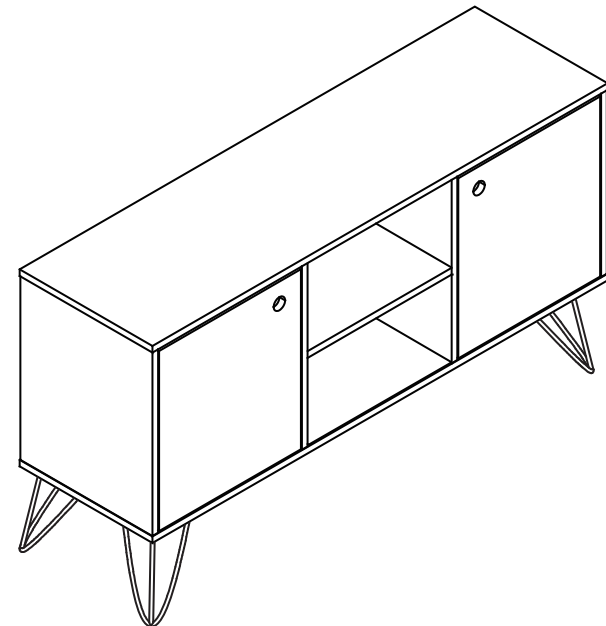
Assembly Instructions

Thank you for your purchase.
Please follow the instructions below for correct assembly.

mocka



WARNING: Any furniture that is not anchored to a wall has the potential to tip over in certain circumstances, i.e. if a child attempts to climb up on the furniture or in the event of an earthquake. Accordingly, we recommend that all furniture is anchored to a wall. We supply a free safety wall anchor with all furniture sold and we recommend these are used to prevent your product tipping. The fixing device provided should fit most wall types, but please note that different wall materials may require different fixing devices from those supplied.



Phillips & Flathead screwdrivers required
For quicker assembly, we recommend the use of a power drill on a low-speed setting.

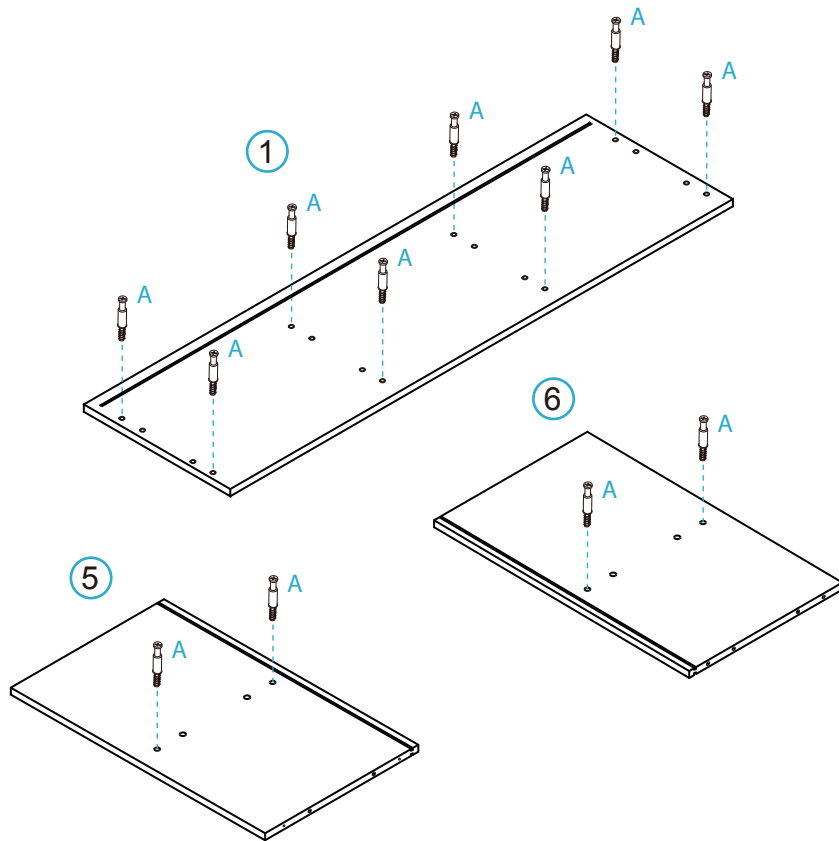
*We recommend using a Flathead screwdriver to tighten all locking nuts 100% before first use.
Please clear any loose wood from the locking nut holes before inserting the nut to ensure it locks 100%.

Vibe/Olsen Buffet

Assembly Instructions

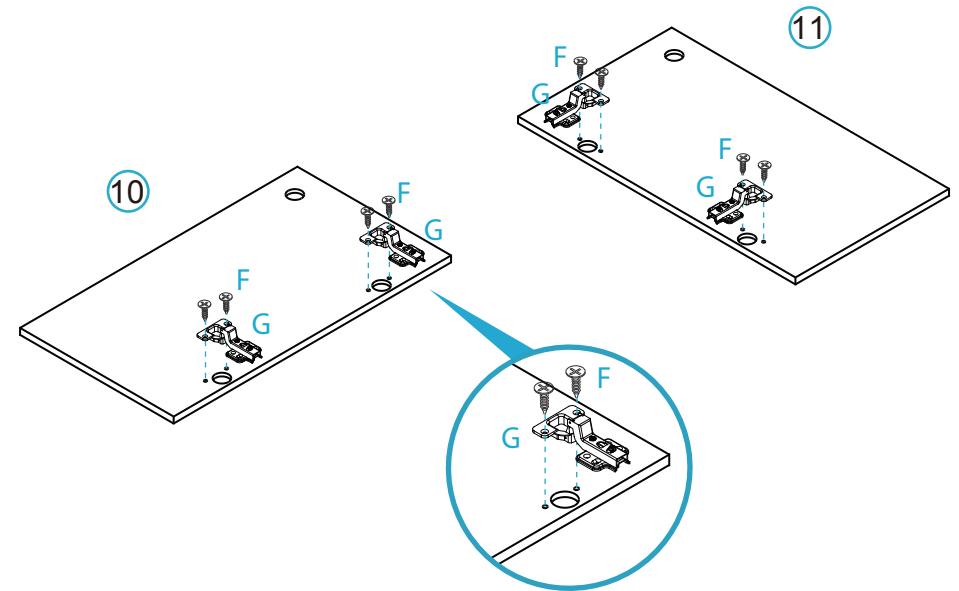
mocka

1



Insert 12x bolts (A) into panels [1], [5] and [6] as shown. Tighten with a screwdriver.

2



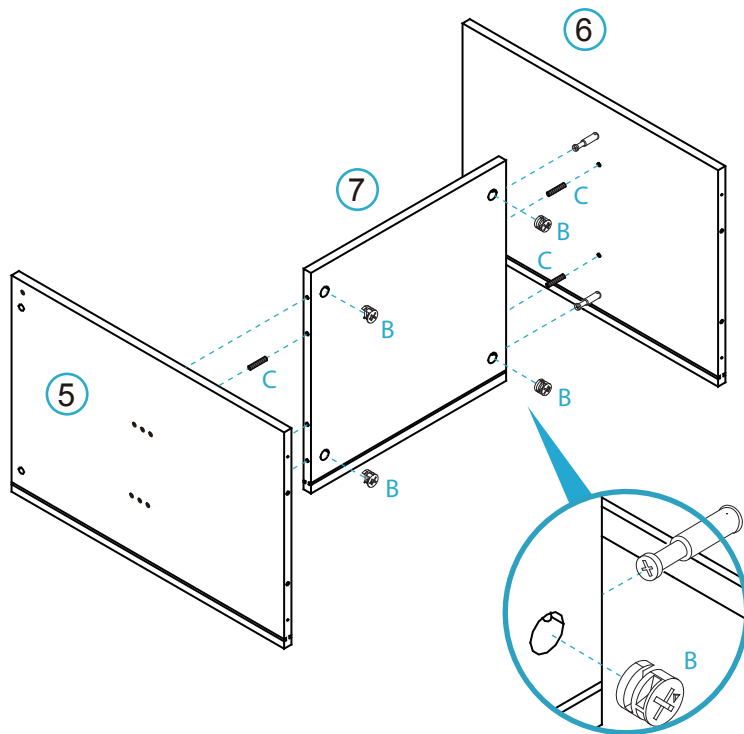
Attach 4x hinges (G) to door panels [10] and [11], securing with 8x screws (F). Tighten with a screwdriver.

Vibe/Olsen Buffet

Assembly Instructions

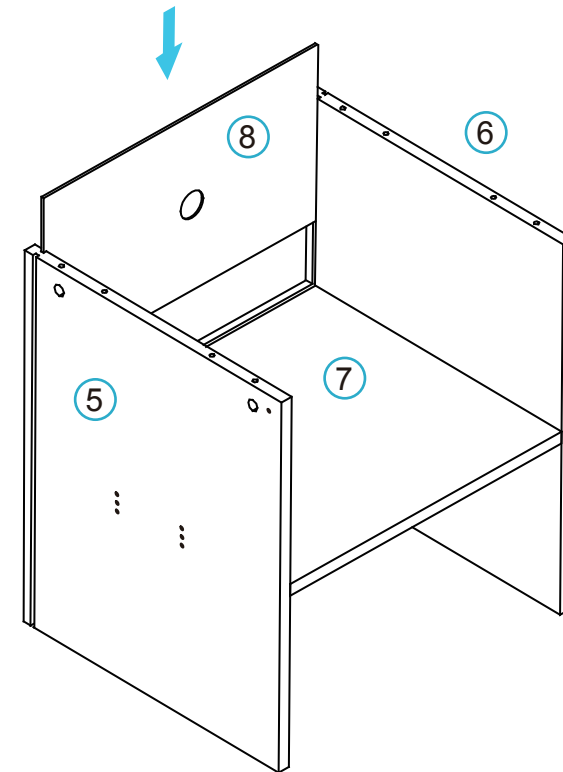
mocka

3



Attach panels [5] and [6] to panel [7] with 4x dowels (C) and secure with 4x locking nuts (B) and tighten with a screwdriver.

4



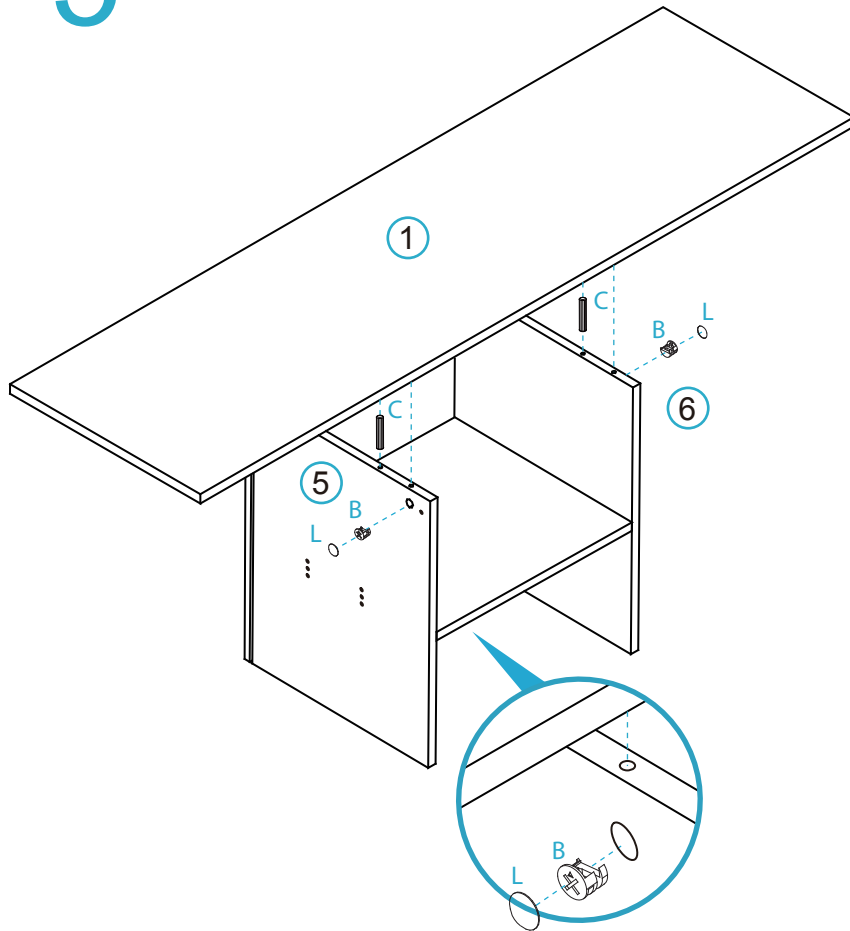
Slide panel [8] between the grooves of panels [5], [6] and [7] to form the back of the unit, as shown.

Vibe/Olsen Buffet

Assembly Instructions

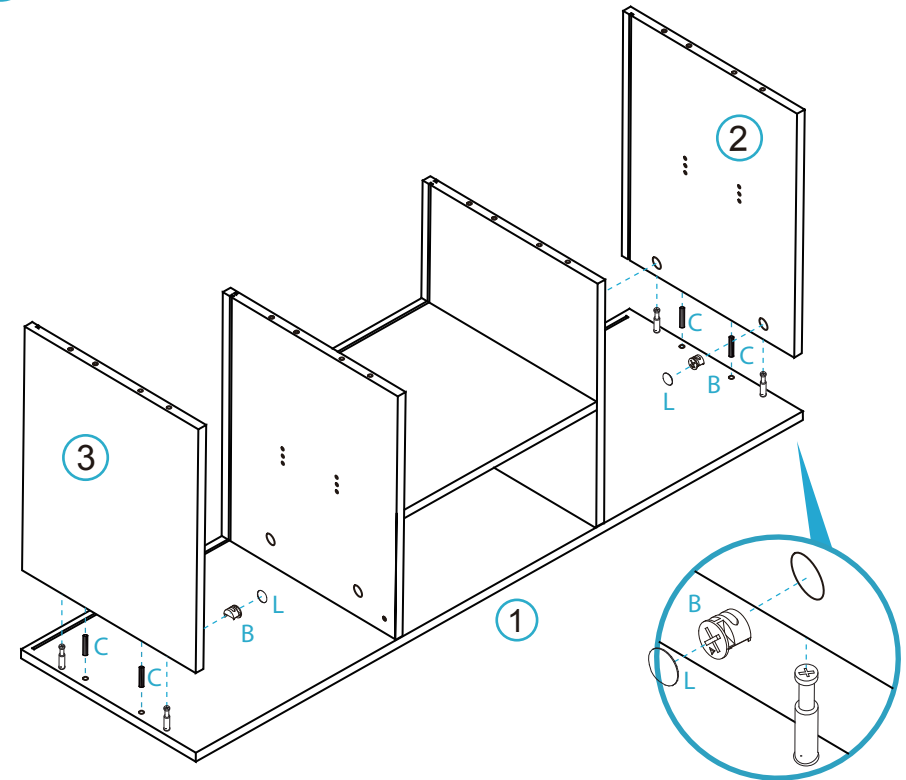
mocka

5



Attach panel [1] to the rest of the unit with 4x dowels (C) and secure with 4x locking nuts (B) and tighten with a screwdriver. Seal the holes with 4 x covers (L).

6



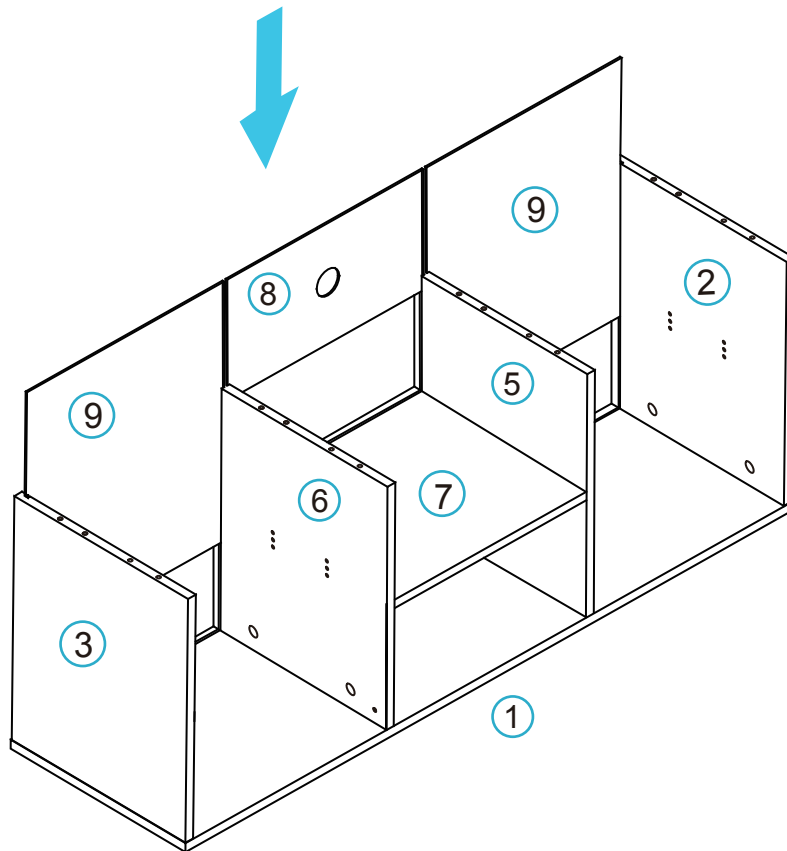
Attach panels [2] and [3] to panel [1] with 4x dowels (C) and secure with 4x locking nuts (B) and tighten with a screwdriver. Seal the holes with 4 x covers (L).

Vibe/Olsen Buffet

Assembly Instructions

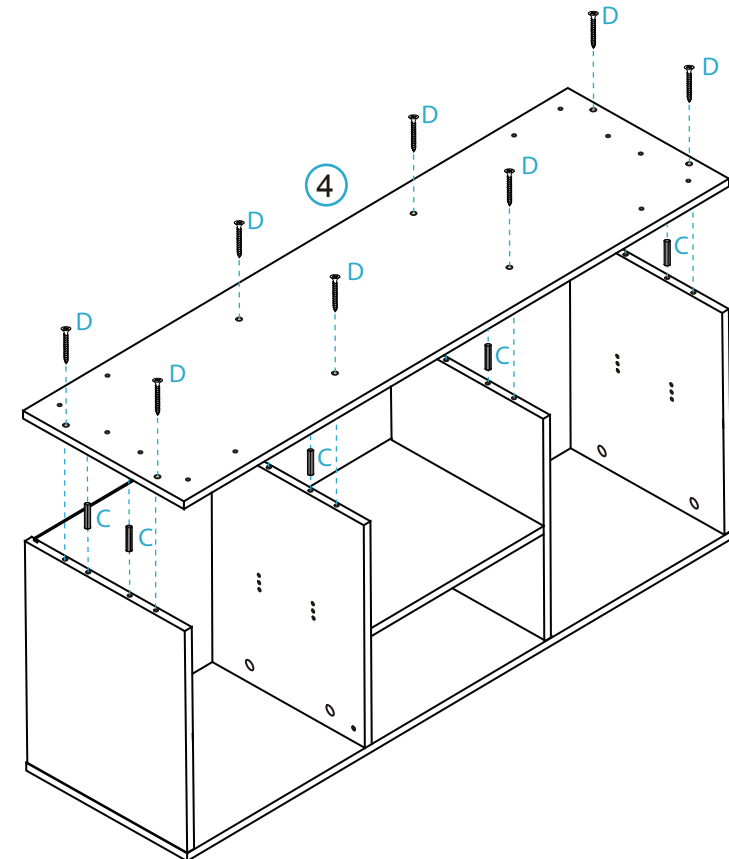
mocka

7



Slide panels [8] and [9] between the grooves of panels [1], [2], [3], [5], [6] and [7] to form the back of the unit, as shown.

8



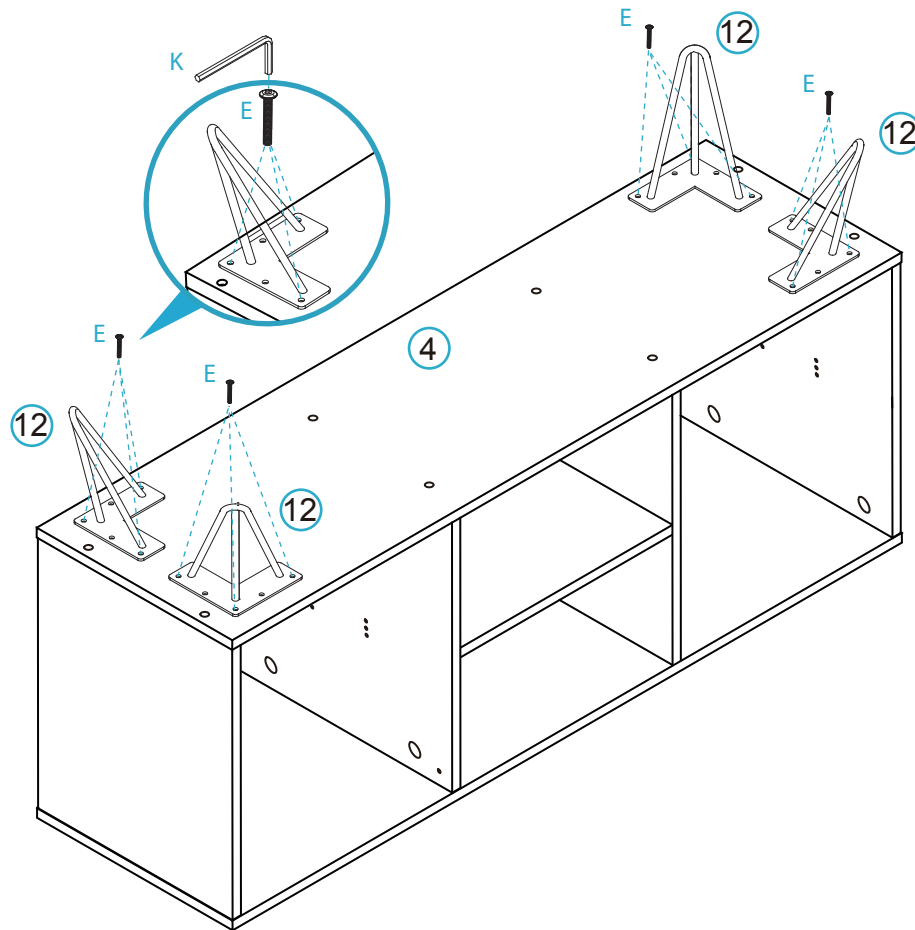
Attach panel [4] to the rest of the unit with 8x dowels (C) and secure with 8x long screws (D) and tighten with a screwdriver.

Vibe/Olsen Buffet

Assembly Instructions

mocka

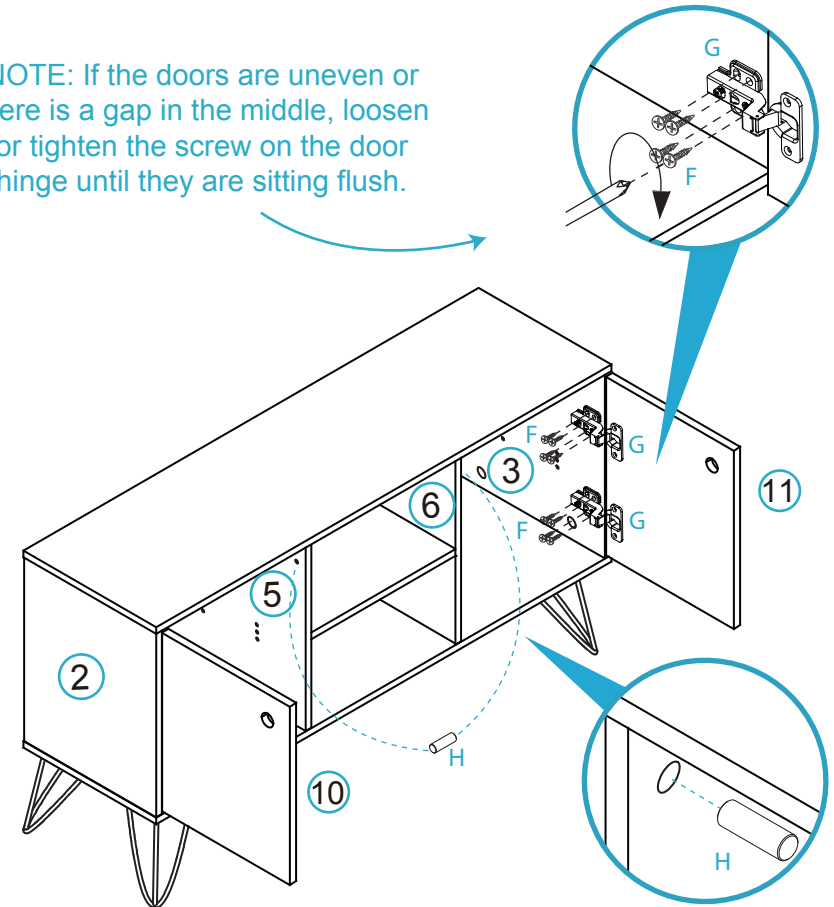
9



Attach 4x legs [12] to the bottom panel [4] with 12x bolts (E), and tighten with an Allen key (K).

10

NOTE: If the doors are uneven or there is a gap in the middle, loosen or tighten the screw on the door hinge until they are sitting flush.



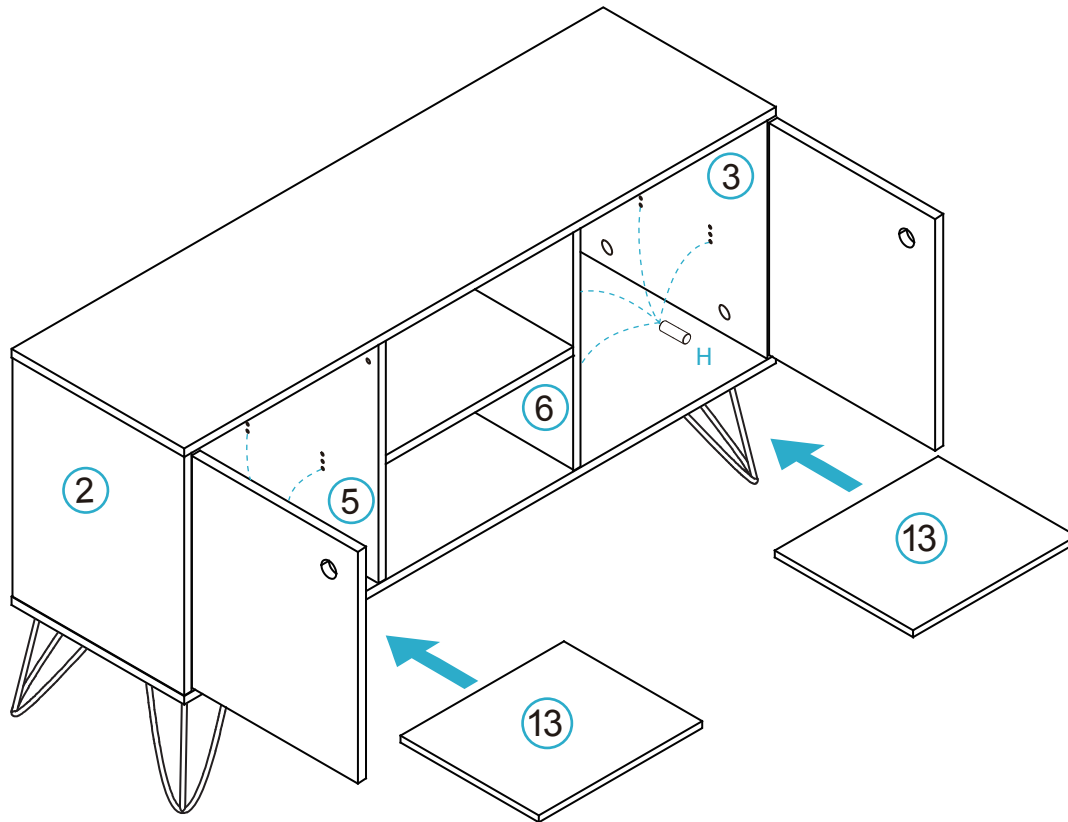
Secure door panels [10] and [11] to the main unit by attaching the other end of the 4x hinges (G) with 16x screws (F) as shown. Tighten with a screwdriver. Insert 2x shelf plugs (H) into the panels [5] and [6] as shown.

Vibe/Olsen Buffet

Assembly Instructions

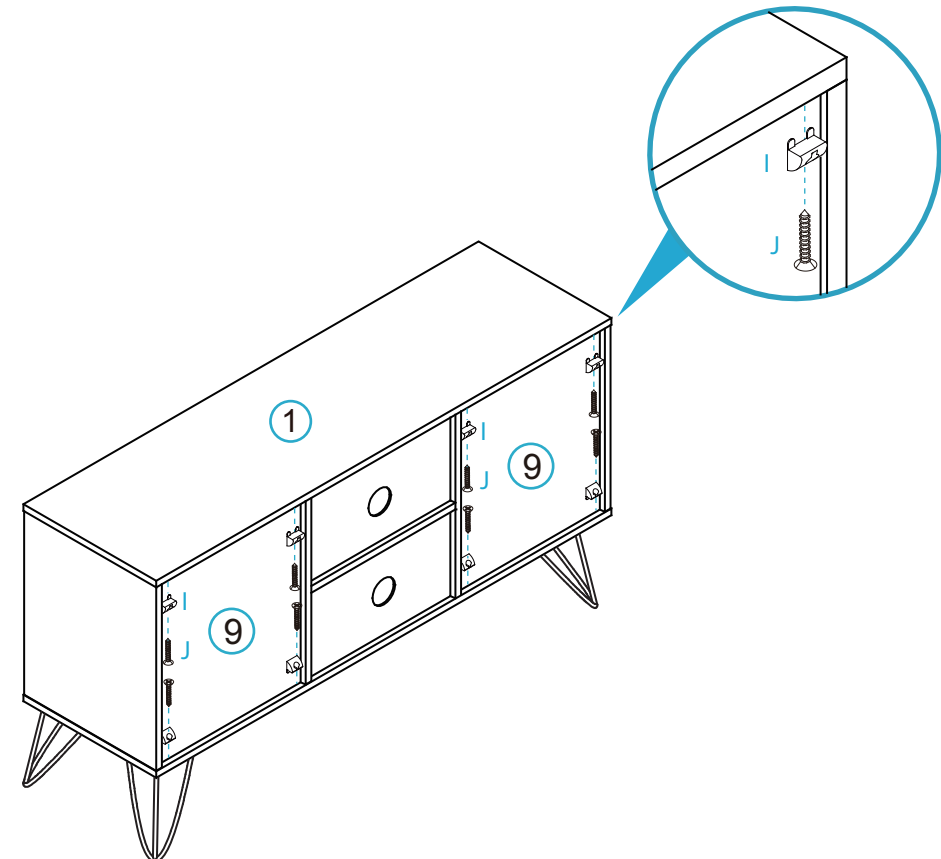
mocka

11



Insert 8x shelf plugs (H) into the end cavities of the cabinet as shown. Insert the shelf panels [13] and balance on top of the plugs.

12



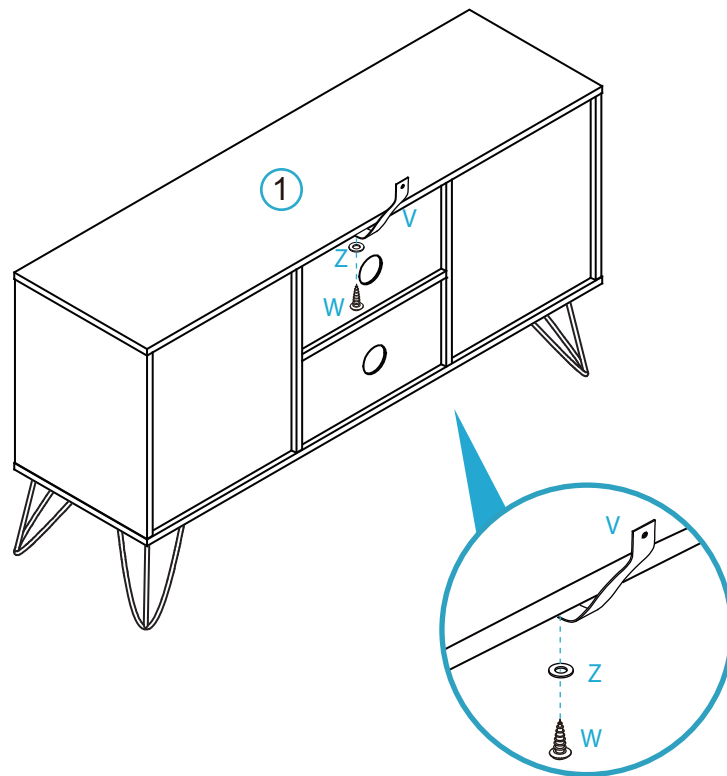
Attach 8x wedges (I) to the corners of the back [9] as shown, and secure with 8x small screws (J). Tighten with a screwdriver.

Vibe/Olsen Buffet

Assembly Instructions

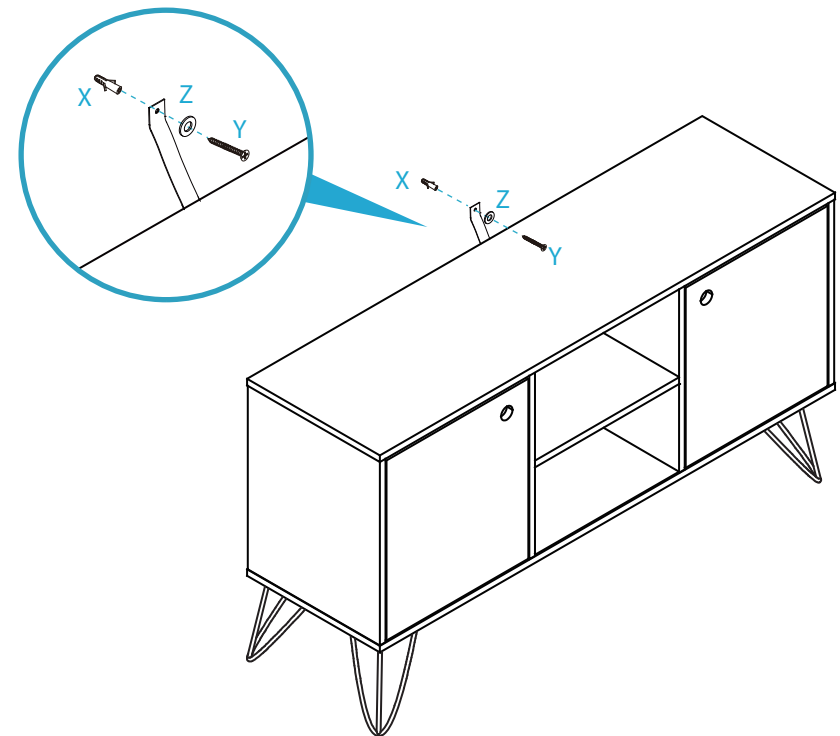
mocka

13



Attach 1x safety strap (V) to the top of the back side of the unit as shown using 1x washer (Z) and 1x screw (W). Tighten with a screwdriver.

14



Once assembled lift furniture into place, do not drag. Use a drill to create a small hole lining up with the top of the safety strap (V). Fasten to the wall using 1x washer (Z), 1x wall plug (X) and 1x screw (Y). Ensure unit is balanced and steady before use. You're done, enjoy!