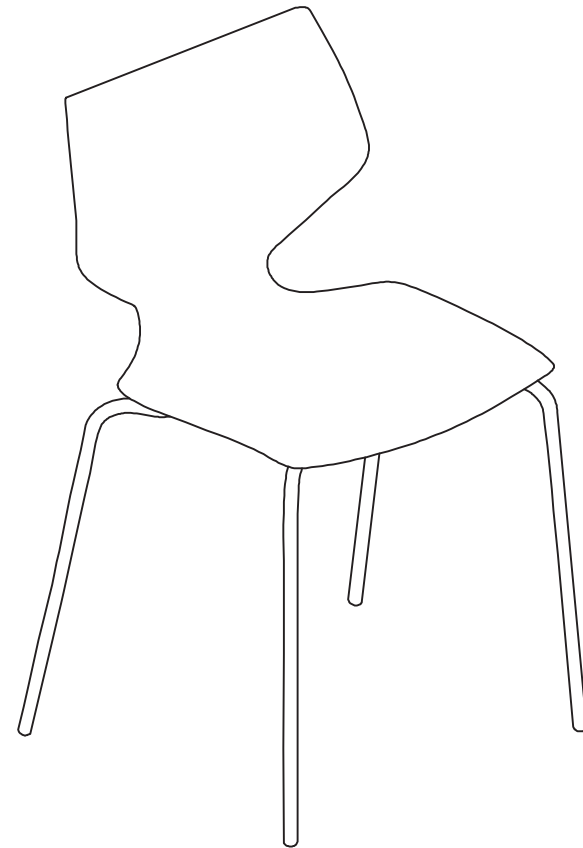
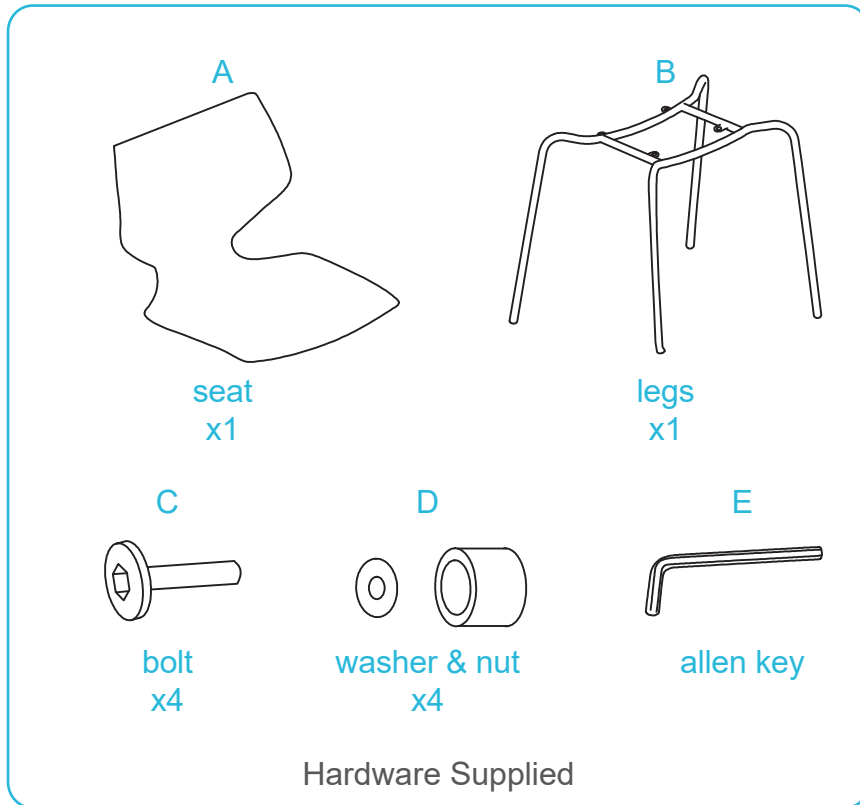


Pia Dining Chair

Assembly Instructions

Thank you for your purchase.
Please follow the instructions below for correct assembly.

mocka

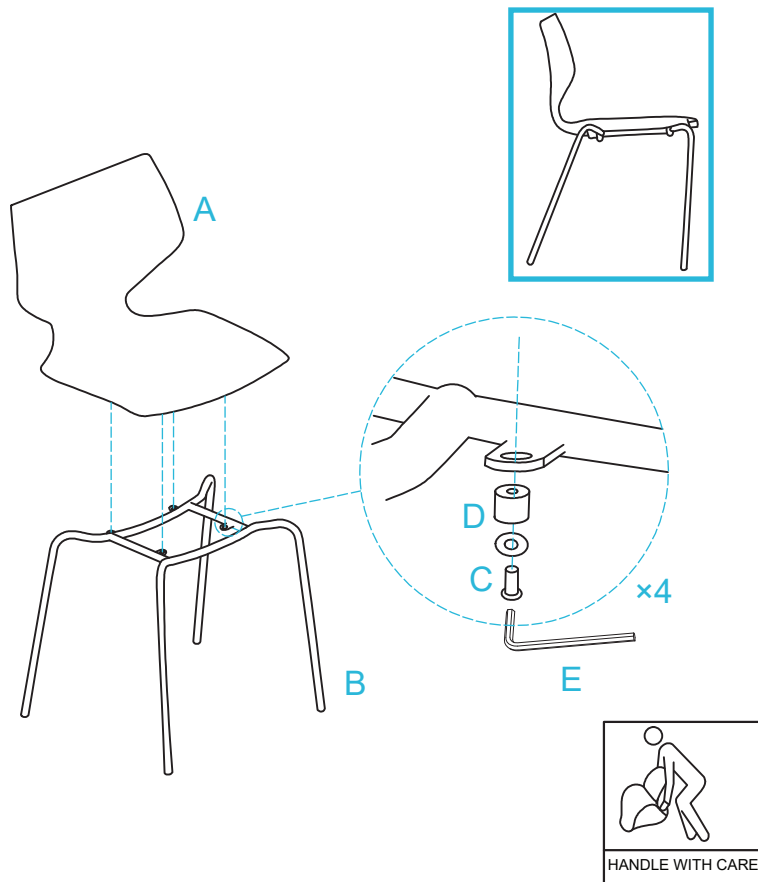


Pia Dining Chair

Assembly Instructions

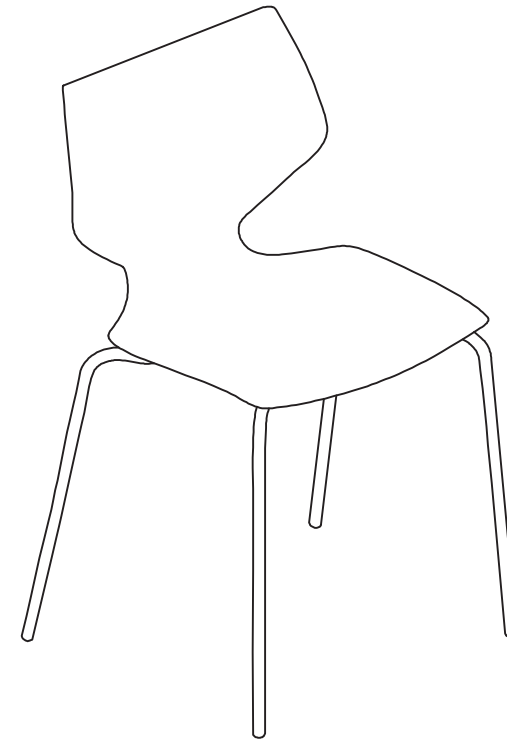
mocka

1



Attach 1 x seat (A) to 1 x legs (B) and secure with 4 x bolt (C) and 4 x washer & nut. Tighten with an allen key (D).

2



Lift the chair into the desired location, do not drag, You're done, enjoy!