

Emily Cradle

Assembly Instructions

Thank you for your purchase.
Please follow the instructions below for correct assembly.

WARNINGS

WARNING – Failure to follow these warnings and the instructions could result in serious injury or death.

WARNING – FALL HAZARD – To help prevent falls, do not use this product when the infant begins to push up on hands and knees or has reached 9kg whichever comes first.

WARNING – FALL HAZARD – Always check that the cradle is securely locked on the base/stand by pulling upwards on the cradle bed. Make sure that all the assembly devices are correctly fitted, as well as the locking devices.

WARNING –
SUFFOCATION HAZARD
– Infants have suffocated
in gaps between extra padding and side of the cradle, and on soft bedding.

WARNING – To reduce risk of SIDS, paediatricians recommend healthy infants be placed on their backs to sleep, unless otherwise advised by your physician.

WARNING – If a sheet is used with the pad, use only the one provided by the cradle manufacturer or one specifically designed to fit the dimension of the cradle mattress.

WARNING – Strings can cause strangulation! Do not place items with

mocka



a string around a child's neck, such as hood stings or pacifier cords. Do not suspend strings over a bassinet or cradle or attach strings to toys.

WARNING – Placing additional elements in the cradle may cause asphyxiation.

WARNING – The assembly elements must always be securely fastened and inspected to make sure they do not collapse and to prevent any of the fastening screws or connection elements from coming loose, as the baby or parts of the baby's clothing could get trapped, such as: dummy cords, hooks, collars and earrings causing a possible risk of strangulation.

WARNING – The cradle should always be placed on a horizontal

Emily Cradle

Assembly Instructions

mocka

floor.

WARNING – Do not let children play near the cradle without supervision.

WARNING – DO NOT use the product if any of the parts are broken, damaged or missing. DO NOT replace any parts yourself.

WARNING – Never use the cover without the metal structure.

WARNING – To prevent the risk of fire: be aware of the risk of placing the cradle near to fire or other sources of heat, such as electric or gas heating devices, etc.

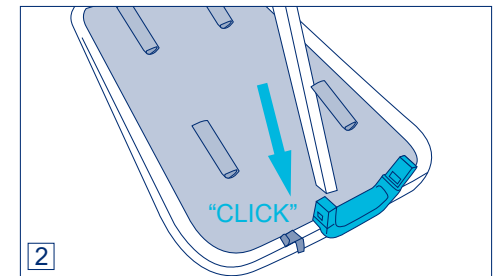
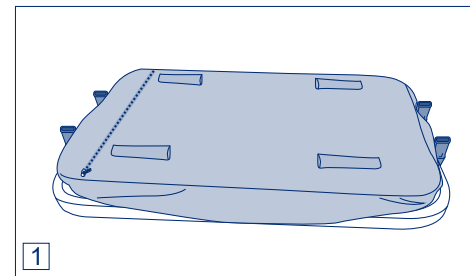
WARNING – To avoid the risk of falls and suffocation, do not use more than one mattress in the cradle. Only use the mattress that comes with the cradle.

WARNING – Do not use accessories that have not be approved by the manufacturer.

MAINTENANCE AND CLEANING:

- Keep the metal parts clean and dry to prevent them from rusting.
- To clean the plastic parts, just use mild detergent and warm water.
- WASHING THE COVER: Wash it by hand and leave it to dry at room temperature.

1



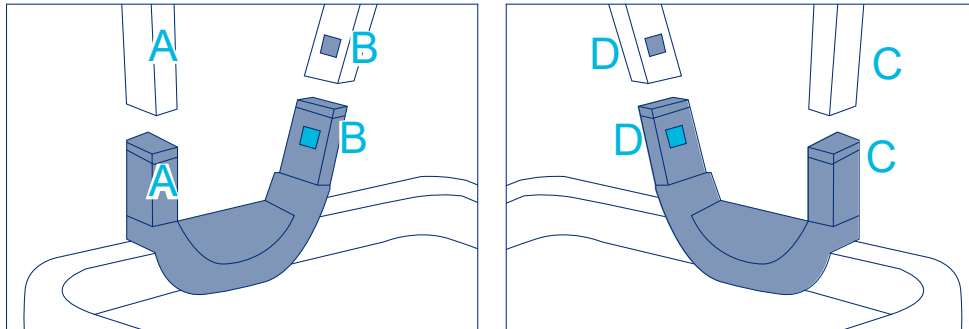
Remove the mattress and place the cradle face down on a table or a clean, flat surface. Insert the 4 legs into the plastic supports aligning the side opening on the leg with the plastic support flange

Emily Cradle

Assembly Instructions

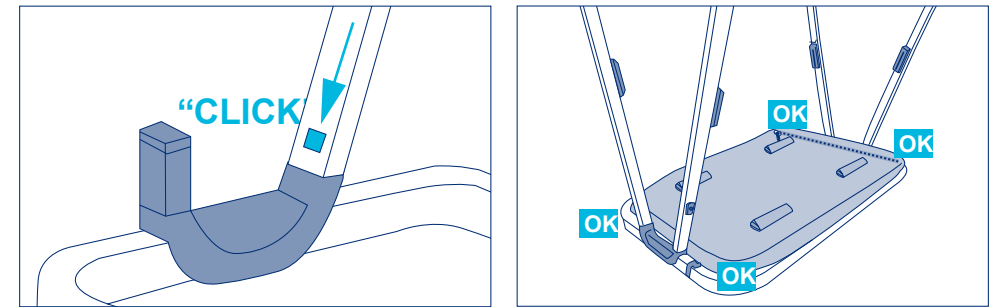
mocka

2



Follow the order marked by the letters A B C D. The letter on the leg should match up with the letter on the plastic support A-A, B-B, C-C, D-D.

3



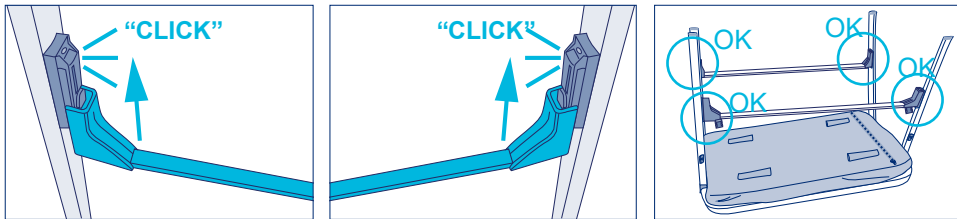
To fasten the leg correctly in place press downwards until you hear the safety click and repeat the same process with the other legs.

Emily Cradle

Assembly Instructions

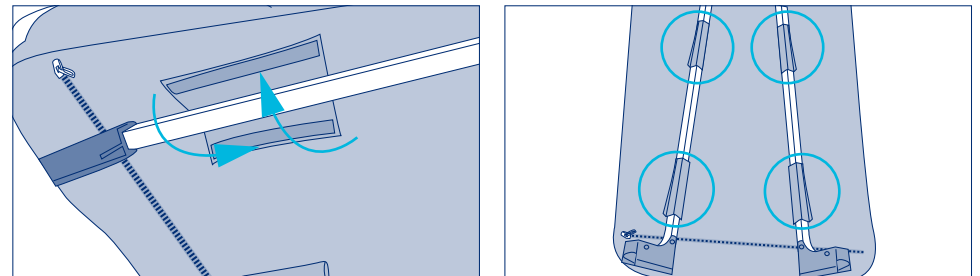
mocka

4



Next, fit the crosspieces by simultaneously inserting the 2 side connectors upwards into the guides until they are slotted in fully. Insert them from the bottom to the top until they have both clicked into place. Repeat the same process with the second crosspiece.

5



Turn the cradle over and put the mattress back in it. Fasten the 4 Velcro flaps around the crosspieces, making sure that they are fully fastened. To dismantle the cradle, follow the same process in reverse.